



**ERCOT Grid Operations**  
**Wind Integration Report : 12/13/2015**

**Current Daily Values:**

Peak Load	<b>37,058 MW</b>
Peak Load Hour (HE)	<b>20</b>
Wind at Peak Load Hour	<b>7,801 MW</b>

Max Wind	<b>10,571 MW</b>
Max Wind Time	<b>14:07</b>
Penetration at Max Wind Time	<b>32.35 %</b>

Max Wind Penetration	<b>32.35 %</b>
Max Wind Penetration Time	<b>14:07</b>
Wind Generation at Max Wind Penetration Time	<b>10,571 MW</b>

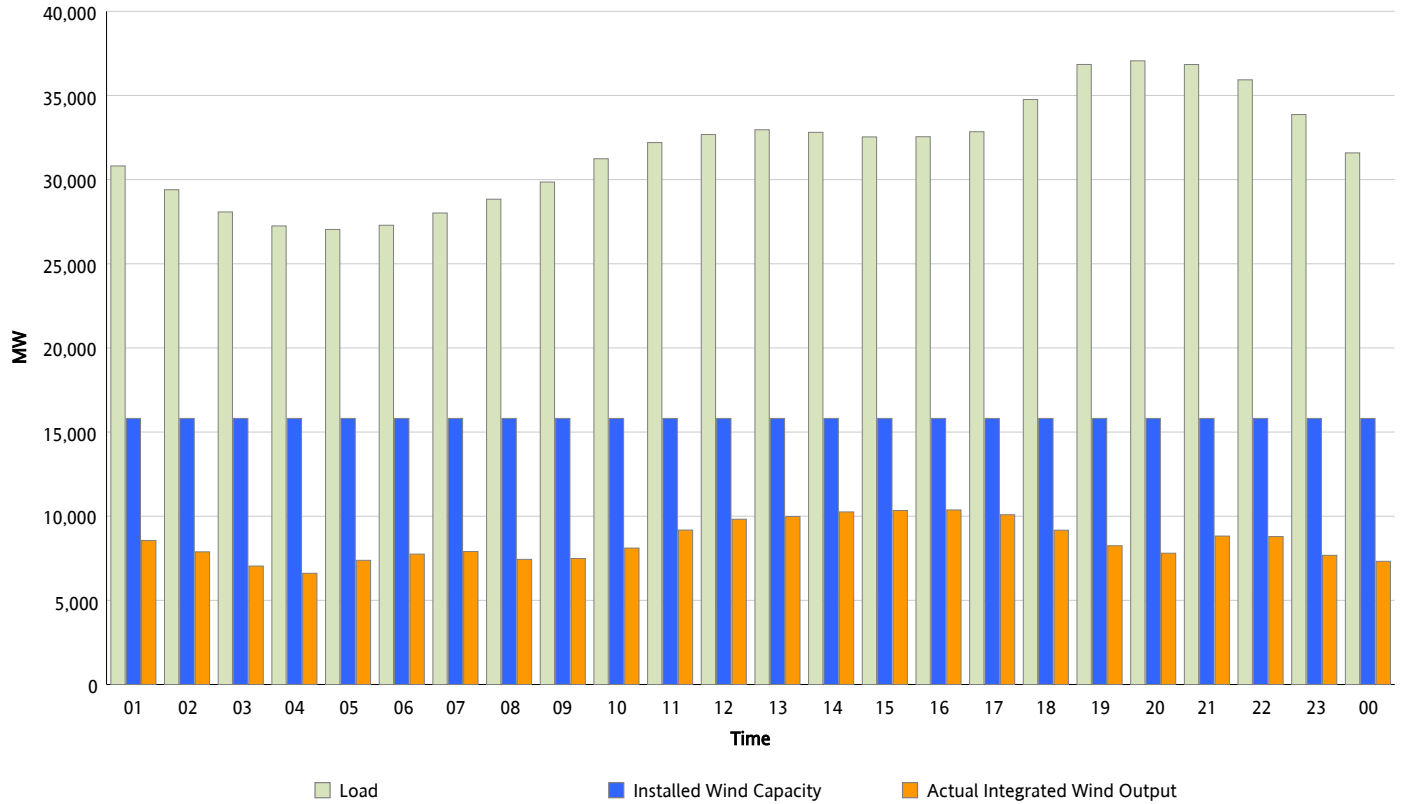
**All Time Record Values:**

Record Wind Generation	<b>12,971 MW</b>
Record Wind Generation Time	<b>11/25/2015 21:10</b>
Penetration at Record Wind Generation Time	<b>36.86 %</b>

Record Wind Penetration	<b>43.55 %</b>
Record Wind Penetration Time	<b>11/26/2015 02:36</b>
Wind Generation at Record Wind Penetration	<b>11,649 MW</b>

## Hourly Average Actual Load vs. Actual Wind Output

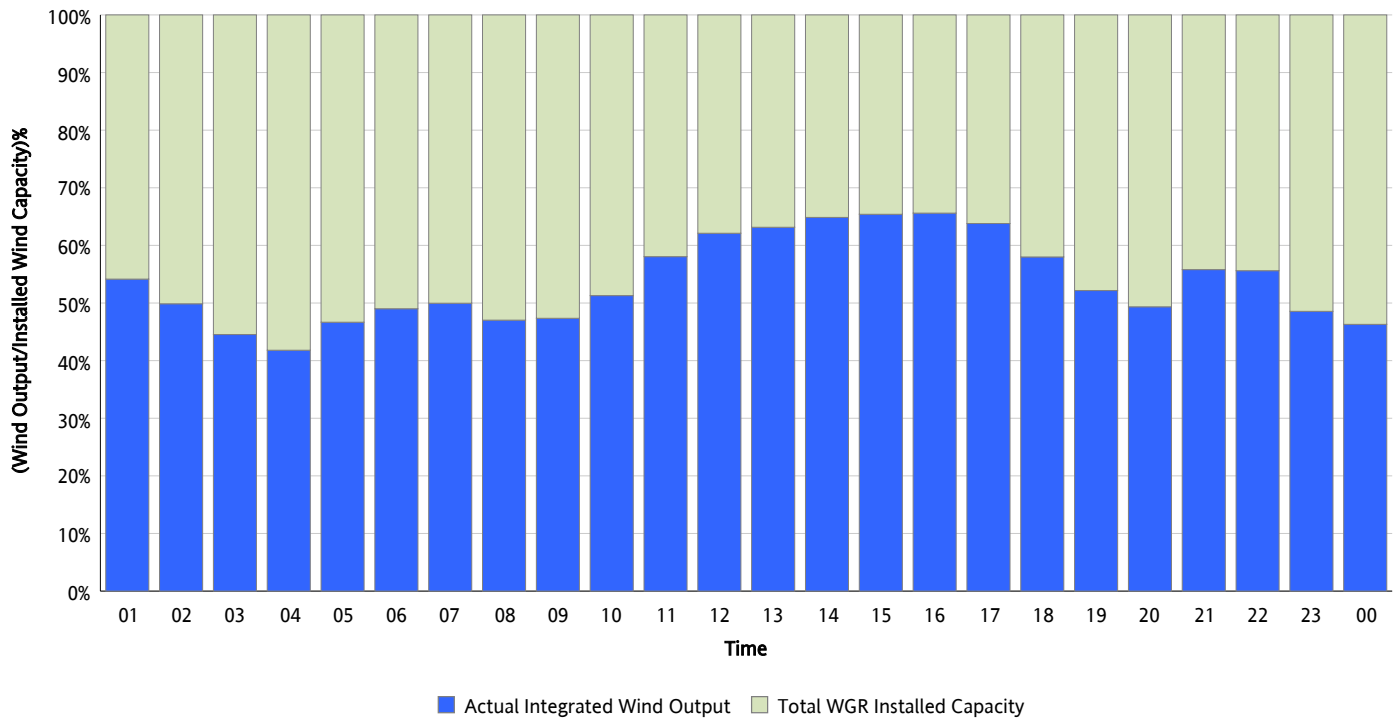
12/13/2015



*\* Wind Record and Wind Max represent instantaneous values and the rest of the values are integrated over the hour.  
Capacity numbers used in the graphs are based on the expected commercial operation date of each Wind Generation Resource.*

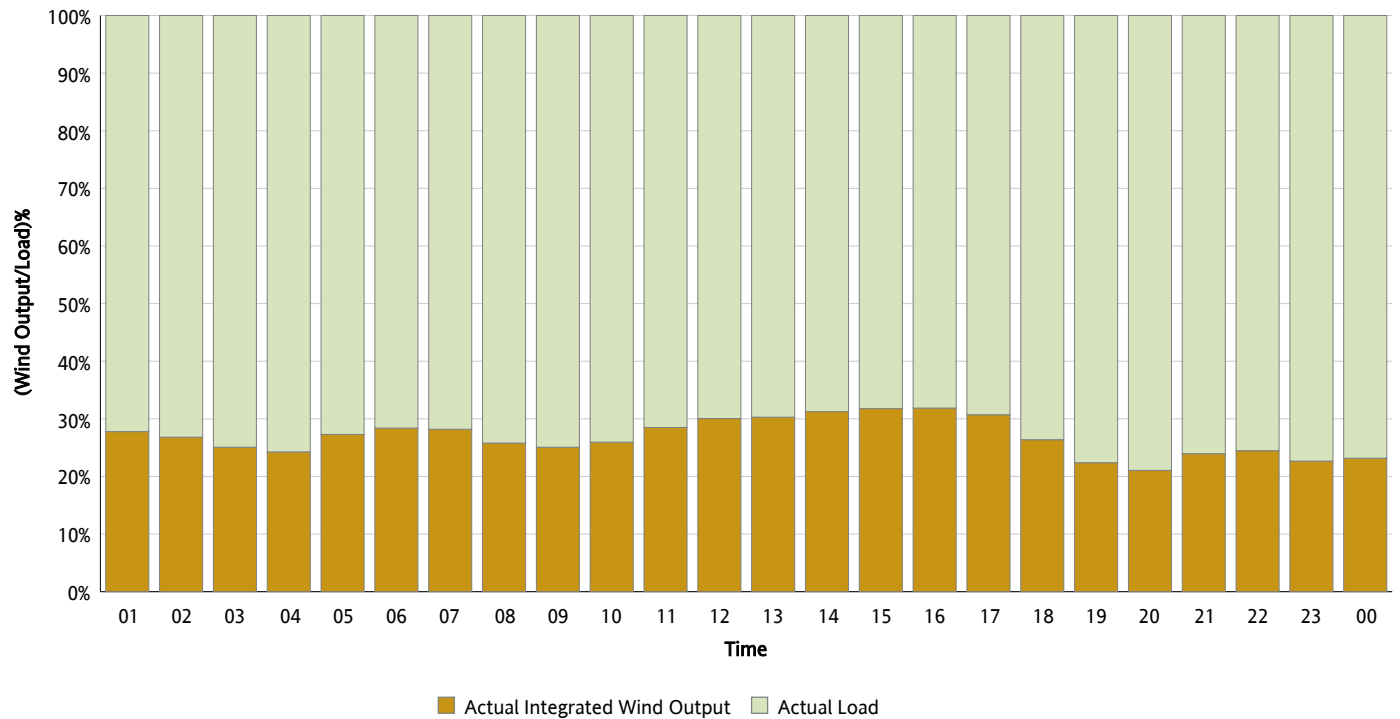
## Actual Wind Output as a Percentage of the Total Installed Wind Capacity

12/13/2015



## Actual Wind Output as a Percentage of the ERCOT Load

12/13/2015



## ERCOT Load vs. Actual Wind Output

12/06/2015 - 12/13/2015

